

APPLICATION

- ▶ Widely used in lighter commercial and industrial applications.
- ▶ To cover any width of opening, any number of doors can be used.
- ▶ To accommodate different building designs, doors can slide to one or both sides.
- ▶ Hinged door for easy access may be incorporated into a sliding door.
- ▶ Where doors are fitted externally, a canopy is recommended.

DOOR SPECIFICATION

Track System: Single Run 180

For Individual Doors:

Max Door Height 3000mm

Max Door Weight Nylon Tyre Hanger 180kg

Door Thickness 35-48mm

For ease of operation it is recommended that the door width should not exceed 75% of door height.

Timber doors for interior use can be of flush construction or glazed.

Timber doors for industrial applications should be framed, ledged and braced.

Metal doors should be constructed of box section, channel or angle framing, well braced and clad with flat or corrugated sheets.

HARDWARE SPECIFICATION

Track: 180
Material: Aluminium
Standard lengths: 2000mm, 3000mm, 4000mm and 6000mm
 Aluminium track available in mill or clear anodised.

Brackets:

Face fitted Stainless Steel, angle 1SS/250

Face fitted Double Bracket SS 5SS/250

Fit at 900mm maximum centres.

Hangers (2 per door):

Hangers Full Stainless

Timber Doors – apron fitting 53GN –

Timber Doors – angle fitting 52GN 52SS/GN

Timber Doors – plate fitting 57GN 57SS/GN

Metal Doors – angle frame 56GN 56SS/GN

Metal Doors – box frame 56GLN 56SS/GLN

Metal Doors – plate fitting 57GN 57SS/GN

All hangers suffixed 'N' have nylon tyre wheels and are fitted with ball race bearings.

Nylon tyre wheel hangers should not be used on installations involving temperatures exceeding 80°C.

Guides:

Timber Doors – face fitting 105R/97

Timber Doors – SS plate fitting 106RB/94

Metal Doors – angle frame 104P/97

Metal Doors – box frame 104PL/97

Multiple Doors 102W/94

Guides with suffix 97 are used with channel 100.

Channels:

100 Galvanised steel

94A Aluminium

94B Brass

94PPA Aluminium Support & Polypropylene

Standard lengths

100 2000mm, 3000mm and 4000mm

94A, 94B and 94PPA 2000mm, 3000mm, 4000mm and 6000mm

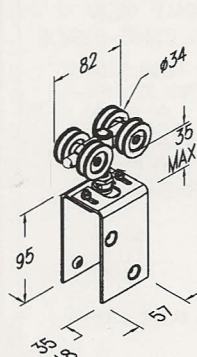
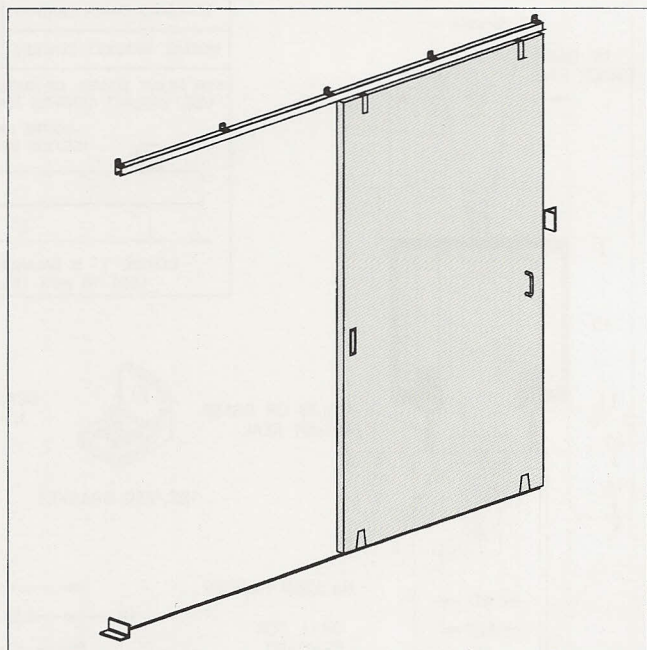
100 pre-drilled for lugging into concrete floor.

94A and 94B channels drilled and countersunk for screwing to timber floor or attaching to lugs 94L when installing in concrete floor.

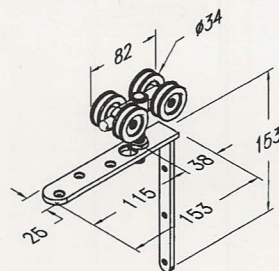
Accessories:

Bow Handles, Flush Pulls, Surface Bolts,

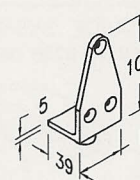
Flush Bolts, Door Stops.



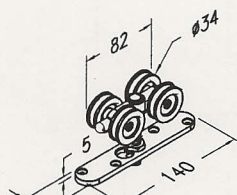
No. 53GN Hanger



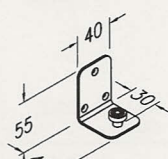
No. 52GN Hanger



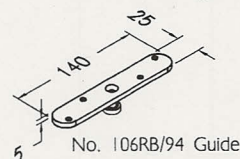
No. 105R/97 Guide



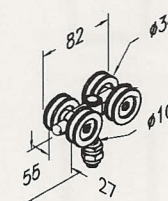
No. 57GN Hanger



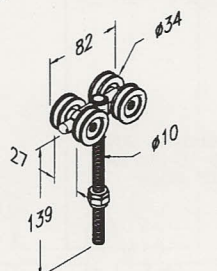
No. 106RB/94 Guide



No. 102W/94 Guide



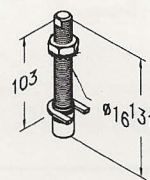
No. 56GN Hanger



No. 56GLN Hanger



No. 104P/97 Guide



No. 104PL/97 Guide

Single Run 180

FOR TOP HUNG STRAIGHT SLIDING DOORS, MAX. 180kg EACH

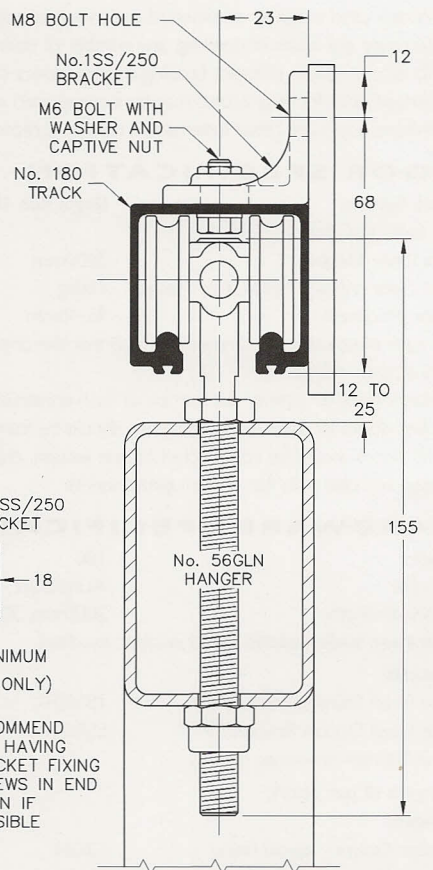
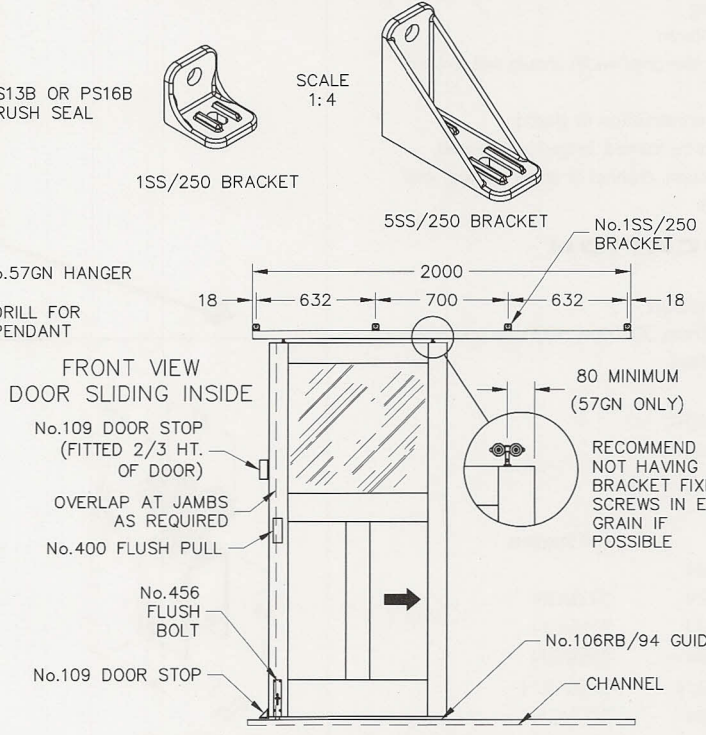
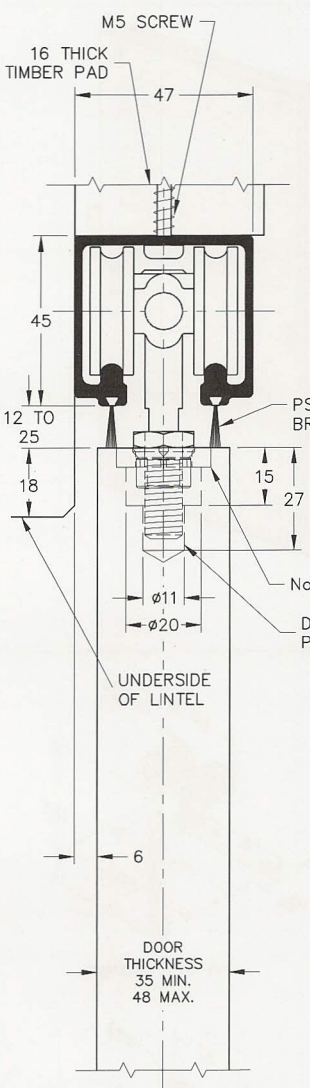
HENDERSON®

SLIDING & FOLDING DOOR HARDWARE

AUSTRALIA'S WIDEST RANGE

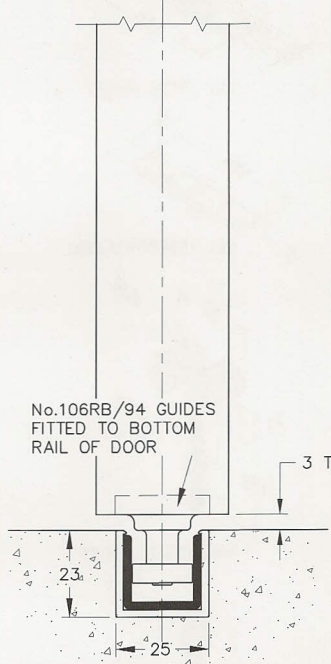
STANDARD TRACK LENGTH	2000	3000	4000	6000
NORMAL BRACKET CENTRES	650 - 700	750	800	750

FOR HEAVY DOORS, OR THOSE SUBJECTED TO ABNORMAL USE, BRACKET CENTRES SHOULD BE REDUCED TO 500



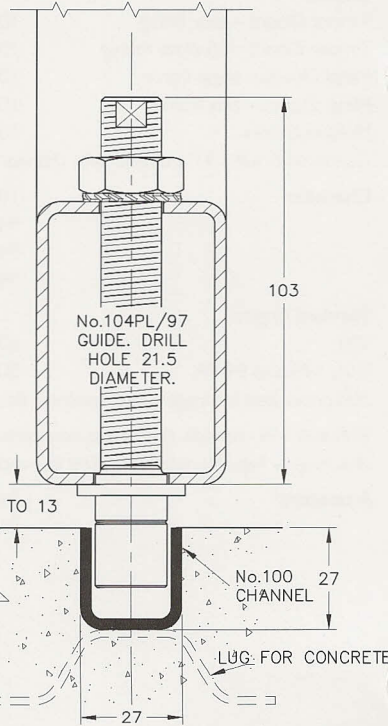
HANGERS AND GUIDES AVAILABLE WITH SHORT STEM FOR ANGLE OR CHANNEL FRAMED DOOR

SECTION SCALE 1:2

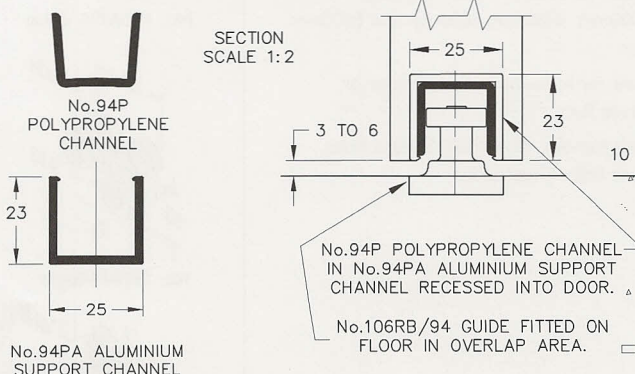


GUIDE SYSTEMS WITHOUT CHANNEL
(REFER TO B20B DATA SHEET FOR MORE INFORMATION)

SECTION SCALE 1:2



GUIDE SYSTEMS WITH CHANNEL



No.94P POLYPROPYLENE CHANNEL IN No.94PA ALUMINIUM SUPPORT CHANNEL RECESSED INTO FLOOR.