

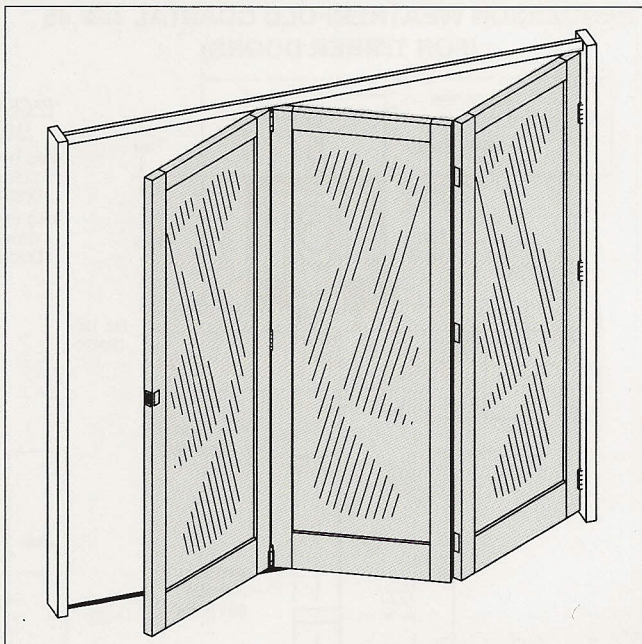
APPLICATION

- ▶ For residential and commercial folding doors where weatherproofing of the opening is required.
- ▶ Weatherfold Coastal has been specifically designed for the Australian market and is third party tested by a NATA approved laboratory to meet the requirements of the new Australian Window standard AS 2047-1999.
- ▶ This section covers Weatherfold Coastal Elite 45 and 75 hardware suitable for surface mounted applications.
- ▶ When extra corrosion resistance is required Weatherfold Coastal Elite is available with stainless steel bearings.

DOOR SPECIFICATION

Track System:	Weatherfold Coastal Elite 45	Weatherfold Coastal Elite 75
For Individual Leaves:	3000mm	3300mm
Max Leaf Height	45kg	75kg
Max Leaf Weight	900mm	900mm
Max Leaf Width	35-50mm	35-50mm
Leaf Thickness		

Folding units of up to eight leaves can be hinged to post.
 Floating units consisting of four, six and eight leaves.
 Instruction on leaf width calculation and clearances is shown overleaf.



HARDWARE SPECIFICATION – TIMBER PANELS

Track:	180	250
Material	Aluminium in Mill or Clear Anodised	
Standard lengths	2000mm, 3000mm, 4000mm and 6000mm	
Hanger Sets:	Includes hanger, guide and hinge	
Intermediate sets:	HEN4-45H(*)	HEN4-75H(*)
Four wheel	HEN4-45SSH(*)	HEN4-75SSH(*)
Four wheel SS bearing		
End Sets:	Includes hanger and guide	
Two wheel	HEN2-45M(*)	HEN2-75M(*)
Two wheel SS bearing	HEN2-45SSM(*)	HEN2-75SSM(*)
Pivot Set:	Top & Bottom Pivots	
	HEN1-45H(*)	HEN1-75H(*)
Hinge Sets:	3 Hinges per set	
Intermediate	HEN3-H(*)	HEN3-H(*)
Intermediate (offset)	HEN7-H(*)	HEN7-H(*)
Intermediate - inward opening	HEN5-H(*)	HEN5-H(*)
Jamb (offset)	HEN6-H(*)	HEN6-H(*)
Meeting Door Sets	2 hangers and 2 guides	
2 x Two wheel	HEN8-45(*)	HEN8-75(*)
2 X Two wheel SS bearing	HEN8-45SS(*)	HEN8-75SS(*)

Channels:

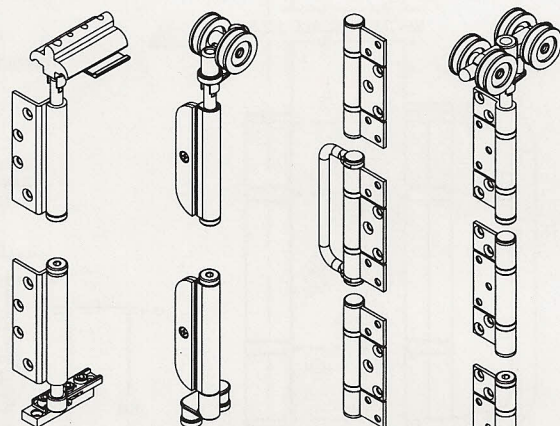
Polypropylene	94P	94P
Aluminium	94A	94A
Brass	94B	94B
Standard lengths	2000mm, 3000mm, 4000mm and 6000mm	

Accessories:

Flush Pull	401(*)	401(*)
Flush Bolt – Brass	456(*)	456(*)
Flush Bolt – Brass 450mm long	456L(*)	456L(*)
Frame Perimeter Seal – white	AQ21W	AQ21W
Frame Perimeter Seal – brown	AQ21B	AQ21B
Door Perimeter Seal – white	AQ48W	AQ48W
Door Perimeter Seal – brown	AQ48B	AQ48B
Track Seal	PS13B	PS13B

(*) select finish

Hardware: (SS) Satin Stainless, (TG) Titanium Gold (PS) Polished Stainless,
 Flushbolts: (SN) Satin Nickel, (PN) Polished Nickel, (TG) Titanium Gold.

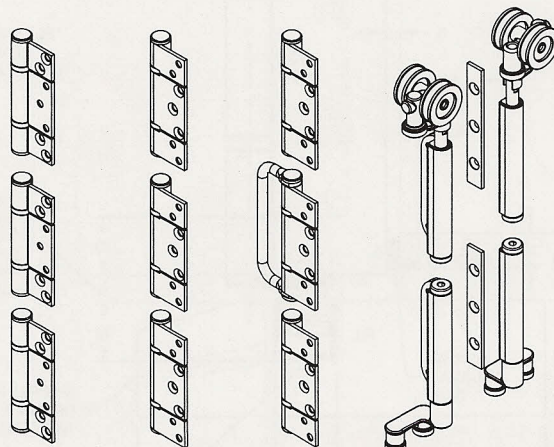


HEN1-45H
Adjustable
Pivot Kit

HEN2R-45M
End Guide Kit

HEN3-H
Hinge Handle
Kit

HEN4-45H
Intermediate
Guide Kit



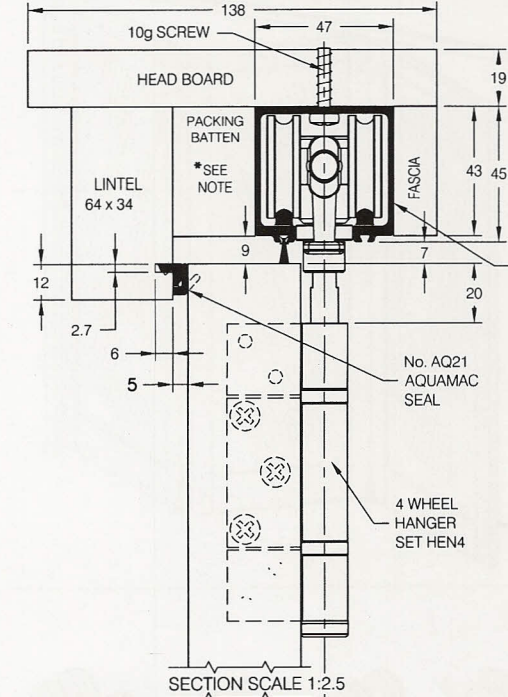
HEN5-H
Hinge Kit

HEN6-H
Jamb (Offset)
Hinge Kit

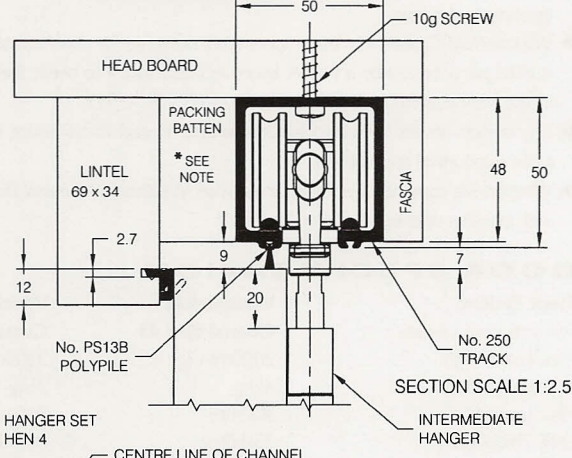
HEN7-H
Hinge Handle
(Offset) Kit

HEN8-45M
Meeting Door
Kit

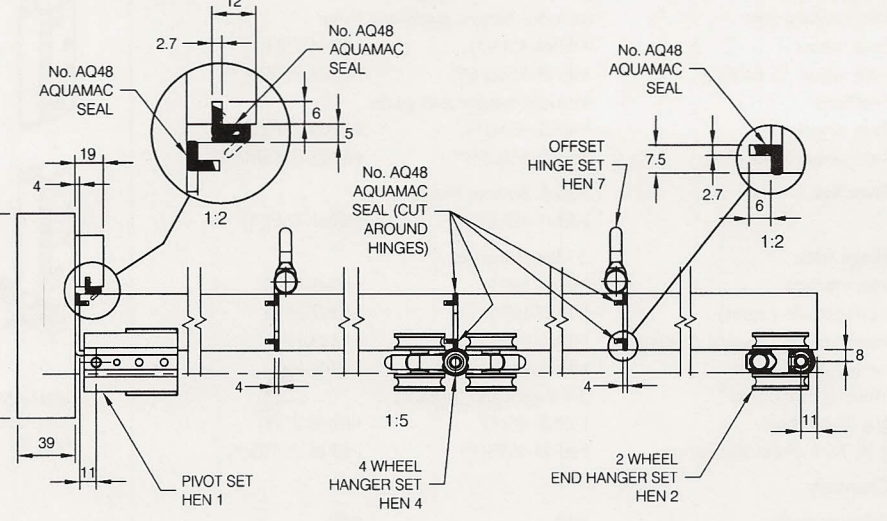
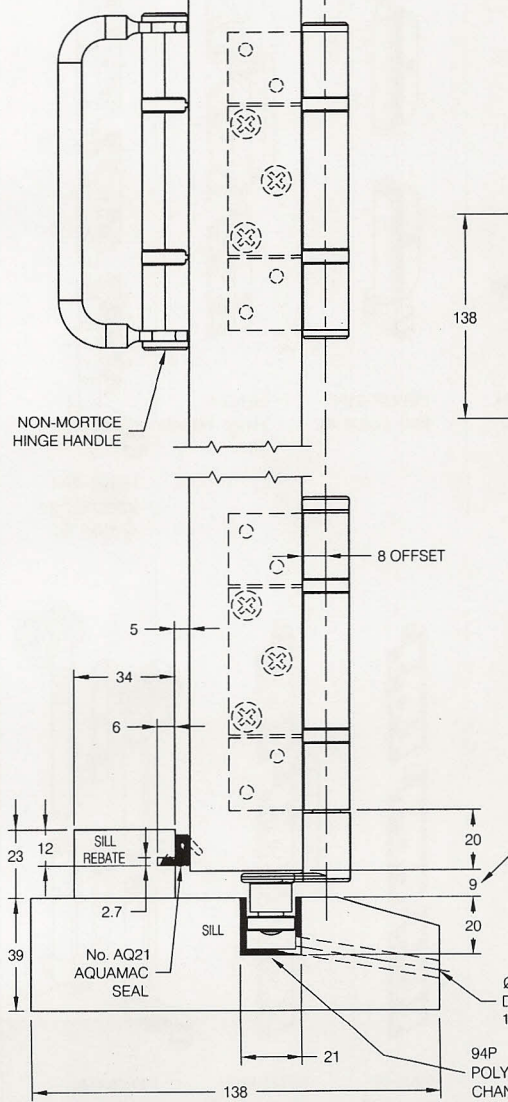
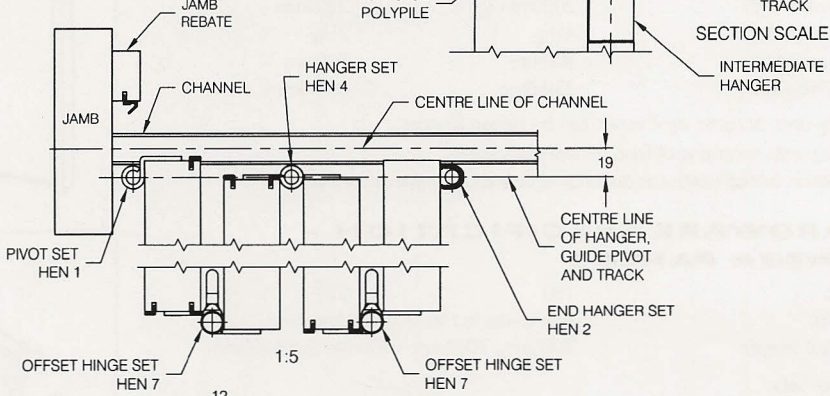
HENDERSON WEATHERFOLD COASTAL Elite 45 (FOR TIMBER DOORS)



HENDERSON WEATHERFOLD COASTAL Elite 75 (FOR TIMBER DOORS)

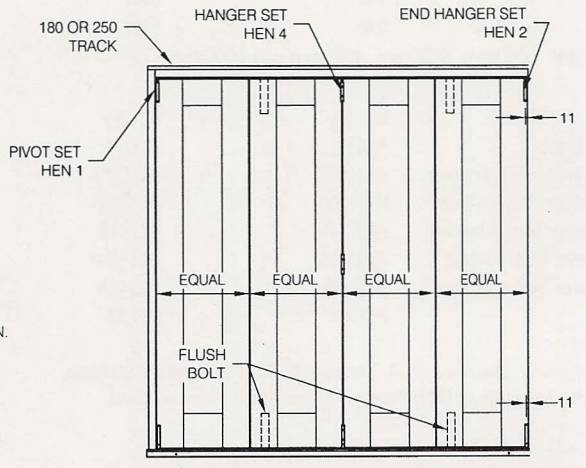


***PACKING BATTEN THICKNESS**
45kg TRACK: - 10.5mm LESS THAN DOOR THICKNESS
75kg TRACK: - 12mm LESS THAN DOOR THICKNESS



SEE PAGE E60 FOR LEAF WIDTH CALCULATION GUIDE

THIS GAP CAN BE REDUCED TO 5mm IF DOORS ARE MADE 4mm LONGER AND PIVOT/GUIDES ARE LOCALLY CHECKED IN.



TYPICAL OUTSIDE ELEVATION